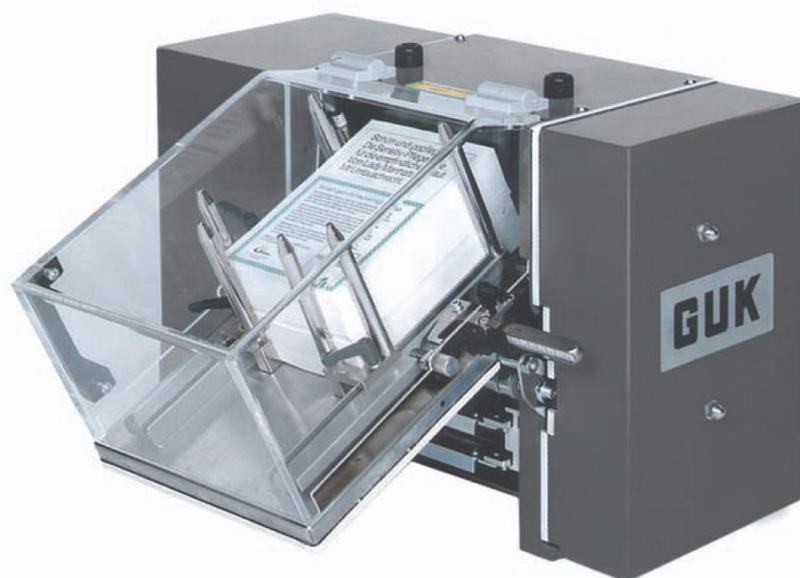




Qualità | Competenza | Innovazione | dal 1974

PRODUCT DATASHEET

Cartonac 91



Overview

Packaging line machine

The Cartonac 91 solution guarantees easy installation for case packers in the packaging sector.

Compactness, precision and reliability are its main features.

Thousands of users have relied on this machine for decades thanks to the safety of its continuous operation.

Technology

The Cartonac 91 machine offers a wide range of options and adjustments to satisfy every customer request.

It is available with different drives and transmissions and can be installed or updated on almost all packaging lines.

Low maintenance and reliability are its strengths.

Notes

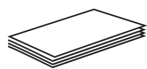
- Picking up the sheets from below
- Code reading (opt.)
- Exact roller adjustment
- Completely maintenance-free rollers
- Transfer belts (opt.)
- Combination of steel and rubber rollers
- Stackable table 450/575 / 650mm (opt.)
- V2A execution (opt.)
- Ejection device upon code reading (opt.)
- Engraving shafts on delivery (opt.)
- Minimum final size 60 x 15mm

- 40-80gr paper

▲ Technical Data

Family	<u>Guk</u>
Folding mechanism	Entrance width 210 or 350mm, 4 or 6 folding pockets
Speed (fold / min)	Max. 300 / min. with a format length up to 320mm Max. 120 / min. with a format length greater than 320mm
Formats	Min. (LxW): 60 x 90mm Tip. (LxW): 160 x 320mm Max. (LxW): 350 x 650mm
Transmission	Power System Drive. Chain or toothed belt from the packaging machine
Options	1 extended folding pocket, 450/575 / 600mm stacking table, V2A cover, etc.
Models	FA 21/4 SVA / 21 CARTONAC 91 FA 21/6 SVA / 21 CARTONAC 91 FA 35/4 SVA / 21 CARTONAC 91 FA 35/6 SVA / 21 CARTONAC 91

▲ Related applications



IN-LINE PAPER FOLDING

Spread leaflets



IN-LINE PAPER FOLDING

Quarters folded leaflets

Headquarters

Via Piersanti Mattarella, 10
20093 Cologno Monzese (MI)
www.dcm-italia.it

T +39 02 26 26 3604
F +39 02 24 25 650
E dcmilano@dcm-italia.it

Branch office

Via Mario Vellani Marchi, 80
41124 Modena

T +39 059 22 15 64
F +39 059 22 16 87
E dcmmodena@dcm-italia.it